



Together for Inclusion

Markfield is an inclusive community hub where people can play, socialise and get information and support



Contents

Our services:

Family drop-ins	4
Children's play	6
Youth sessions	8
Adults sessions	10
Advice & support	12
Volunteer befrienders	14
Training	15

Our contact details are on the back page

Our funders

We are supported by a range of funders including:



Registered Charity Number: 289904 Company number: 1693876

About Markfield

Markfield is an inclusive community hub where people can play, socialise and get information and support. Markfield was founded in 1979 by parents of disabled children. We are an independent registered charity.

Our vision

- A world where disabled, Deaf and autistic people are treated as equals, have a voice and can live the life they want.

Our purpose

- To enable disabled, Deaf and autistic people to be themselves, take risks and live life to the full
- To focus on the needs of the whole family and break down isolation
- To promote respect of disabled, Deaf and autistic people and support their full participation in society

Our values

Inclusive

We are for disabled and non-disabled people

Innovative

We explore new ways

Empowering

We enable participation

Connected

We are part of our community

We work both with people who have a diagnosed disability, and those without a diagnosis – to recognise hidden needs and include people labelled as ‘challenging.’

Read inside to find out about our services and how to access them. If you have any questions please get in touch – see back page for our contact details.

Family drop-ins

Our friendly drop-in sessions are a great way to get support and meet other families. Just turn up – no need to book!

Saturday adventure play

You can drop in to play in our wonderful adventure playground on Saturdays between 11am and 3pm. We have big play structures with slides, swings, climbing frames, a zip wire, and bonfire pit.

Age range: up to 16 years. Under 8s need to come with an adult parent/carer. Children over 8 years old who can play without support are welcome to come on their own without an adult.

When

Saturdays 11am to 3pm (except December and January)

Cost: £3 suggested donation

Family Club

On the second Saturday of the month in term-time we open our building and playground for our popular Family Club. There is a shared lunch, and Family Support Workers are on hand to offer support and information.

When

Second Saturday of each month that falls in the school term.

Cost: £3 suggested donation per family (includes lunch)



“ When I came to Markfield Family Club for the first time I felt as if a great weight had been lifted from my shoulders ”



Under 5s stay and play

Children, mums, dads & carers love our under 5s 'Stay and Play'. Sessions are inclusive – for both disabled and non-disabled children, and are creative, educational and fun, including messy play, music, lots of toys and activities, large soft play room and garden.

When

Thursdays 11.30am to 2.30pm in term-time

Cost: £3 per family per session

Parent & carer support groups

Come and join us for a tea or coffee at our friendly parent/carers drop-ins. You can speak to one of our Family Support Workers, access our rolling program of interesting guest speakers and learn more about what we can offer you and your family.



When

Term times:

Everyone – Fridays 10am to 12 noon

Transition & Adulthood group (for parents/carers of adults or young people preparing for adulthood) – Fridays 10am to 12 noon

Turkish speaking group – Wednesdays 10am to 12 noon

Cost: Free

Information Hub

Pop in to our information hub to access information about services and resources, volunteers are on hand to help you research information online and can sign post you to useful organisations.

When

Fridays 10am to 12 noon in term-time

Cost: Free

Children's play

Inclusive after school clubs and holiday playschemes run in holidays where disabled and non-disabled children play together. Markfield's highly trained staff are experienced in including children with a wide range of disabilities.

What's available at Markfield's After School Clubs & Playschemes

Activities & Facilities include

Indoors

- Arts and crafts and cooking activities
- Two floors of soft play room
- Computer room and music equipment
- Lots of toys, books and games



Outdoors

- Huge adventure playground
- Tunnels, dens, swings & slides
- Bonfire pit & BBQ
- Zip wire & trampoline
- Football goals and basketball hoops
- Skateboard & bike ramps



Playschemes run activities outside Markfield too, such as:

- Trips to local parks
- Going bowling



“ Markfield is my favourite place I like seeing all my friends here. ”



“ My child is SO happy there. I wish I could turn back time and have gone to Markfield earlier ”

Children's play sessions are for

Disabled children Families who qualify for a 'short breaks' personal budget from the local authority can use this to pay for Markfield after school clubs and playschemes. We also have some free places for children who have additional needs but who do not qualify for a 'short breaks' budget. **Siblings** we have free places on some clubs for siblings.

When

Children's after school clubs Term-time 4pm to 6.30pm
Playschemes 10am to 3pm.

How to book

Please get in touch (see back page) to book free and subsidised sibling places and for cost of 'short breaks' funded places.

Transport

We offer accessible minibus transport to and from sessions, with trained escorts.

Youth sessions

Markfield runs afternoon and evening clubs for young people. You can socialise, relax, join in games and choose activities you enjoy. There is music, art, sport, films, games and plenty more to get involved with.

Youth clubs and playschemes are for:

Disabled young people: Families who qualify for a 'short breaks' personal budget from the local authority can use this to pay for after school clubs and playschemes. We also have some free places for young people with additional needs who do not qualify for a 'short breaks' personal budget.

Siblings: we have free and subsidised sibling places.



When

Youth clubs 4pm to 6.30pm or 6.30 to 9pm

Youth holiday playschemes 10am to 3pm

How to book

Please get in touch with us (see back page) for details of the cost of 'short breaks' funded places, and to book free siblings places.

Youth Participation

Youth participation is important at Markfield. We have a steering group of young people called 'Independent Young Advisors' that help guide some of our Family Support work and a youth leadership group called MPower who run their own projects and campaigns to empower young people and make sure their voices are heard.

“ I got in trouble at school and excluded. I didn't get diagnosed 'til too late. People don't understand that a disability like ADHD, which is invisible, can change how you behave ”

When

The Independent Young Advisors meet once a month on a Saturday 11.30am to 2.30pm. MPower will be running from January 2017. The group will meet every two weeks on a Thursday 6.30pm – 9pm.

How to join

Our youth participation groups are for young people with Special Educational Needs or Disabilities who are passionate about young people having a say in decisions that affect them and are willing to work together with other young people to make things happen.

This group is free

If you are interested in joining contact us (see back page)



Adult sessions

Our day and evening sessions for adults with learning disabilities offer a range of activities and enable people to develop new skills and interests in a context of support and friendship.

Adult sessions are for

- Adults who have a learning disability, difficulty or autistic spectrum disorder

Cost Sessions can be paid for from your Individual Personal Budget and are between £15 and £100 depending on how much support you need. We also have some free places for adults with moderate Learning Disabilities who do not meet the local authority criteria for a personal budget. Transport Markfield can offer transport to those who are unable to travel independently.

The sessions we offer are: **All for One**

This club for young adults with learning disabilities, Autism or Asperger's syndrome enables those who attend to build social skills, participate in arts and sports activities in a relaxed and supportive session.

When

Mondays from 6:30pm to 9:00pm



Art Engine

This fun, lively session allows adults the chance to develop their creative talents in a safe, supportive group. Activities include:

- Painting, photography, sculpture, film, drama and music
- Trips and gallery visits
- Relaxation session

When

Mondays from 11am to 3pm

MK at Nite

The weekend begins at MK at Nite - a popular, friendly social club with a night-club feel run by its own elected committee.

Activities include:

- Dancing, DJ training and dancing and talent shows
- Men's & women's discussion groups
- Cooking groups
- Film shows, quiz nights and trips out

When

Friday evenings
6.30pm to 9pm

“ The staff
make me laugh,
we do lots of
activities ”



Advice and support

Markfield's Family Support Team offers free specialist advice and information about Special Educational Needs and Disabilities (SEND), disability benefits, behaviour support, transition & adulthood and guidance on other support services you can access.

SEND Information, Advice and Support Service

The SEND Information, Advice and Support Service provides impartial information, advice and support for young people and parents/carers of children with Special Educational Needs and Disabilities.

We offer:

Support in attending meetings, contributing to assessments and reviews

Directing children, young people, parents to additional support services

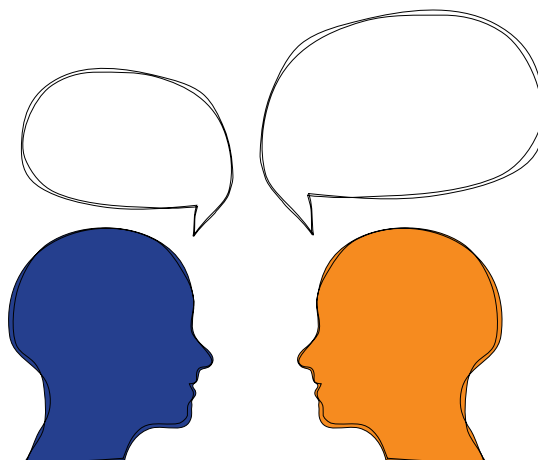
Help when things go wrong, including: support with exclusions, arranging or attending early disagreement resolution meetings.

Independent Supporters are available to specifically help with the transition from SEN Statements to Education, Health and Care plans (EHCP) or for help requesting an EHCP assessment.

Phone our helpline for advice or to book an appointment:

020 8802 2611.

- Mondays 9.30 to 1pm
- Wednesdays 4.30 to 8pm
- Thursdays 2.30 to 6pm



Family Support advice

If you would like to talk to one of our Family Support Workers you can book onto one of our **specialist advice surgeries**. They happen throughout the week and are based both at Markfield and also other venues in Haringey: schools, libraries and the Child Development Centre.

Some families may require more in-depth support during vulnerable periods of family life. We can sometimes offer a higher level of support – for example attending meetings with social services or visiting your home. Book into an advice surgery and we can discuss this with you.

Transition & Adulthood advice

We can provide specific advice and support if you are a young person preparing for adulthood or a disabled adult. This might be help in planning for the future, accessing services and increasing independence.

How to book appointments

Telephone our Family Support Team Administrator **020 3667 5233** or email **familyadmin@markfield.org.uk**



Volunteers

Markfield has lots of opportunities for volunteering: on our play and social clubs, holiday playschemes, Saturday adventure playground sessions, in administration or office work and at events.

Markfield also runs a Family Befriending scheme where trained befriending volunteers are matched with families to offer extra support.

This can include:

- Playing with children at home
- Helping families to go out in their local community
- Supporting siblings of disabled children
- Spending time with parents

Volunteers are Disclosure and Barring Service (DBS) checked, attend free training and receive ongoing support and supervision.

To find out more about becoming a volunteer or if you would like a volunteer to support your family contact our Volunteer Coordinator **Gillian Goodchild**

Tel: 020 3667 5228 Email: ggoodchild@markfield.org.uk



Training

Markfield offers free training workshops and courses for parents/carers. We also have training workshops for professionals and can develop bespoke training based on your staff needs. Professional training can be delivered here at Markfield or at your setting, please contact us to discuss training options for your organisation.

Understanding the Special Educational Needs system

Covering the key principles of the Special Educational Needs and Disabilities Code of Practice.

Positive behaviour management

Exploring the importance of understanding behaviour, strategies for promoting positive behaviour and managing behaviour that challenges.

Understanding autism for parents and carers

An opportunity to learn more about autism and communication, developed by the National Autistic Society.

‘Stepping Stones’

A 10-week course designed for parents of under 5s to help their children’s language development through music & play



Strengthening Families

Strengthening Communities:

A 12-week parenting programme, designed to promote better outcomes for children.

How to book: please contact us (see back page)

Cost: Free for parents/carers. Please contact us for professional training costs.

Contact Markfield

Address: Markfield, Markfield Park, Markfield Road, London, N15 4RB

Telephone: Telephone: 020 8800 4134 from 9.30am to 5pm

Email: enquiries@markfield.org.uk **Web:** www.markfield.org.uk

Twitter: [Twitter@MarkfieldProj](https://twitter.com/MarkfieldProj)



Our centre is in Markfield Park Walking either via Markfield Road, or Crowland Road through Markfield Park, or along the River Lea towpath Driving via Markfield Road.

Parking is available at the centre.

Tube: Seven Sisters, Tottenham Hale.

Bus: 41, 76, 123, 149, 243, 259, 279

Overground rail: South Tottenham, Seven Sisters, Tottenham Hale.

You can hire Markfield's amazing building and adventure playground for your party or event!

Our building is within the award-winning Markfield Park. We have a huge double height hall, two floors of softplay, extensive outdoor adventure playground, a kitchen, garden and much more!